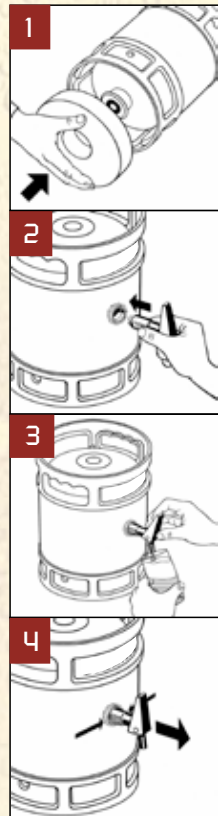




tap instruction - easy tap

preparation/cooling

Make sure your doughnut has been in your freezer or freezer chest for at least 16 hrs before using it. The Keg has to be cold (3 -5oC) before dispensing. Make sure you position your keg in the shade and we suggest to place a bag of ice on top of the Keg.



positioning of the keg / placement of the ice pack (donut)

The doughnut is placed underneath the Keg (remember you are drawing beer from the bottom of the keg!)

using the easy tap

Before inserting the DSI tap make sure the clips (wings) are bent to the outside. Use sharp object such as knife to wedge the side clips to the outside. Once you insert the tap by holding it with your thumb and pointing finger you want to hear a loud click sound. Pull on the tap and make sure it is secure in the keg socket.

tap

To tap position thumb on bottom of tap and ledge pointing finger over the top edge of tap. Hold the glass diagonally and against the tap. Pull the tap (levering on your thumb) all the way back – there will be no flow. By slowly releasing the tap again (towards the Keg) beer will start flowing. You can regulate the flow by wedging the tap back and forth.

after the tap enjoyment:

the tap can be removed by pressing both clips and pulling it out.

after removal, please:

- rinse the tap with hot water,
- clean the bung hole with a wet cloth and
- cool the keg and the ice pack again.

Troubleshooting

- In case beer continues poring jerk back the tap towards you and release spontaneously so tap catapults back into rest position. If still flowing turn around keg, swivel the tap around and repeat 4 a few times.
- Please contact the brewery directly at 411-250 if you could not get the tap to stop.
- Further useful tip: If flow seems sluggish – turn Keg upside down and swivel tap around. Place glass under tap and pull as per instruction above. You will have CO2 gas flowing. A tapping noise should be heard which is the CO2 regulating valve releasing gas into the beer. Placing your ear on the keg you will hear a bubbling sound. Your Keg is intact and ready for poring. Turn keg back to tapping position and continue tapping ice cold and fresh Camelthorn Beer ... Prost!!

security advice: keg is under pressure! do not heat, freeze or disassemble the parts!

